

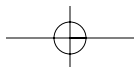
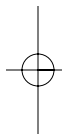
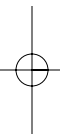
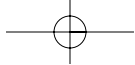


WENTWORTH

APARTMENTS

11255 E. Alameda Avenue
Aurora, Colorado 80012
Phone (303) 341-6585
Fax (303) 341-6431





*W*entworth is an established community located within walking distance to the Smoky Hill Cutoff Park 'N' Ride and minutes from I-225. Nestled well off Alameda Avenue, Wentworth also sits between two sprawling golf courses and across from Expo Park.

*O*ur sparkling Junior Olympic sized pool makes cooling down after your workout in our 24-hour fitness center perfectly pleasant. Whether it's a picnic in our landscaped courtyard or watching the kids climb the playground, you'll agree, Wentworth is worth every penny.



COMMUNITY FEATURES

- ☞ Garages 10' x 20'
- ☞ Junior Olympic Pool
- ☞ 24-Hour Fitness Center
- ☞ 24-Hour On-Site Emergency Maintenance
- ☞ Two 24-Hour Laundry Rooms Inside Each Building
- ☞ Abundant Parking
- ☞ On Highline Canal
- ☞ Convenient to DIA
- ☞ Playground
- ☞ Billiards Room
- ☞ Party Room

APARTMENT FEATURES

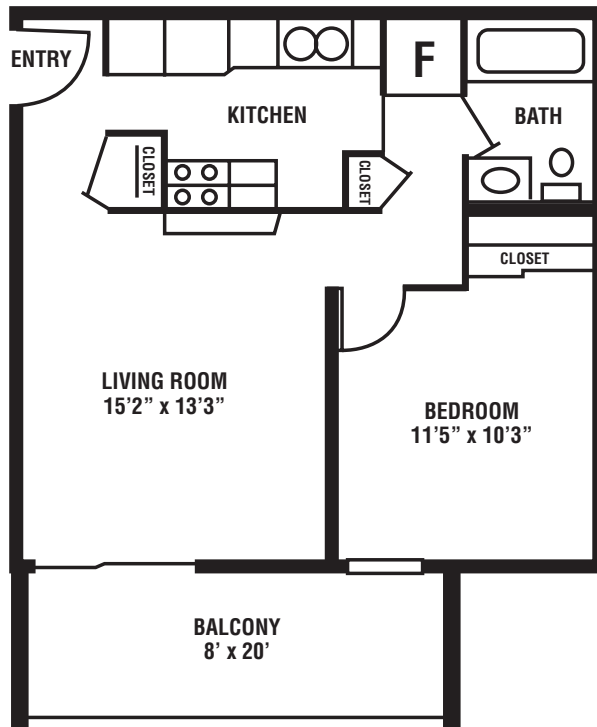
- ☞ Individually Controlled Heating & Air Conditioning
- ☞ Huge Patios & Balconies
- ☞ Wall-To-Wall Carpeting
- ☞ Ample Closet Space
- ☞ Large Spacious Rooms
- ☞ Smoke Detectors
- ☞ Dishwashers
- ☞ Garbage Disposals



FANTASTIC FLOORPLANS

ONE BEDROOM/ONE BATH

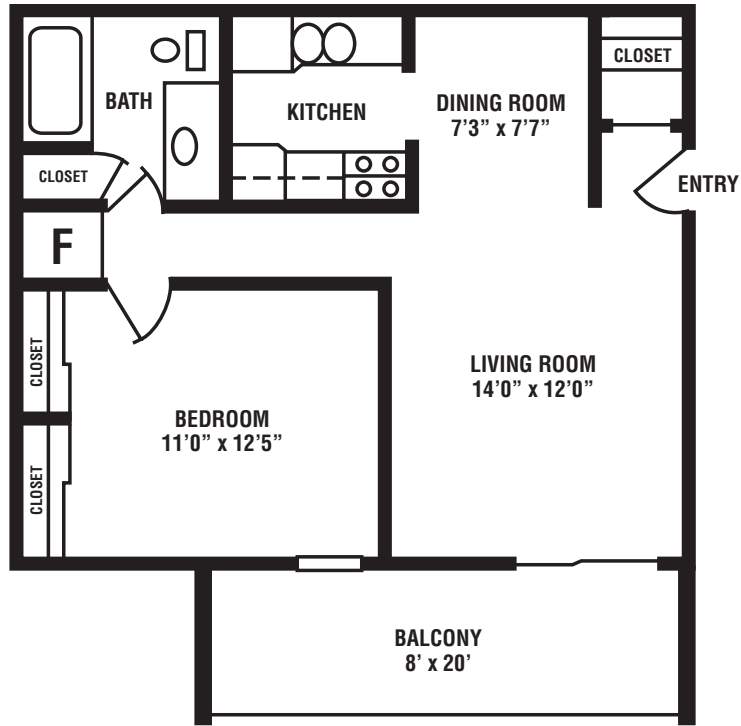
The Aspen
560 square feet



NOTES* _____

* Prices subject to change

ONE BEDROOM/ONE BATH
The Elm
760 square feet

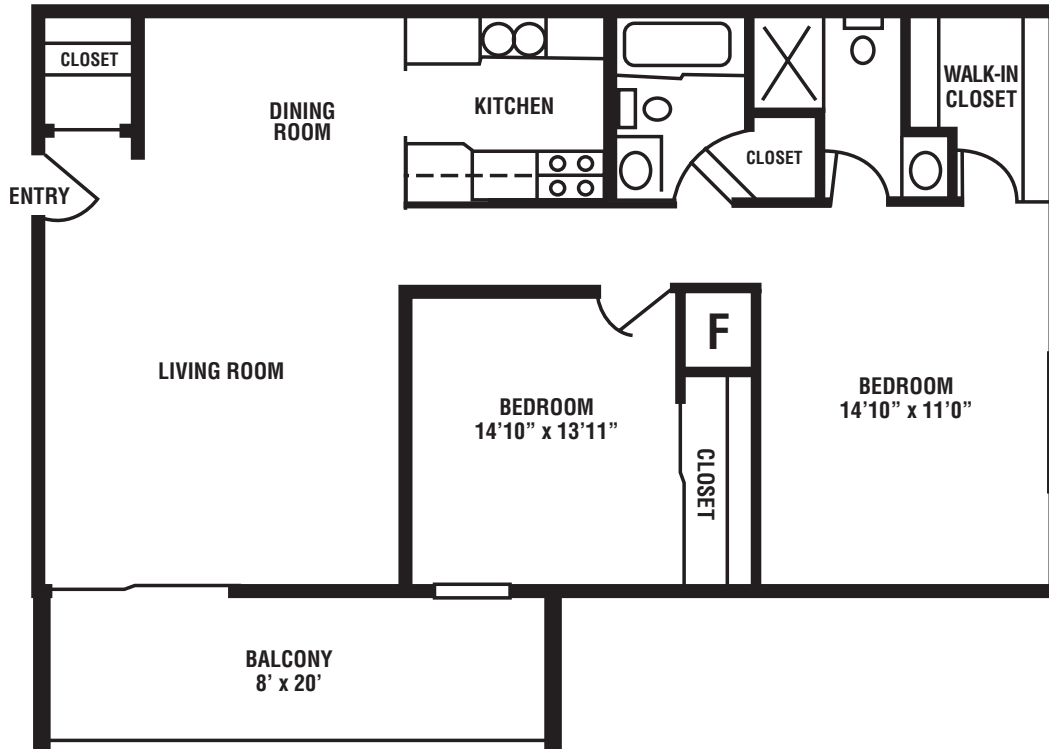


NOTES* _____

* Prices subject to change

TWO BEDROOM/TWO BATHS

The Maple
1000 square feet



NOTES* _____

* Prices subject to change

PETS

We welcome your furry friends here at Wentworth Apartments. Pets are limited to 2 per apartment, fees and breed restrictions may also apply.

